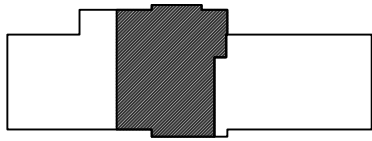
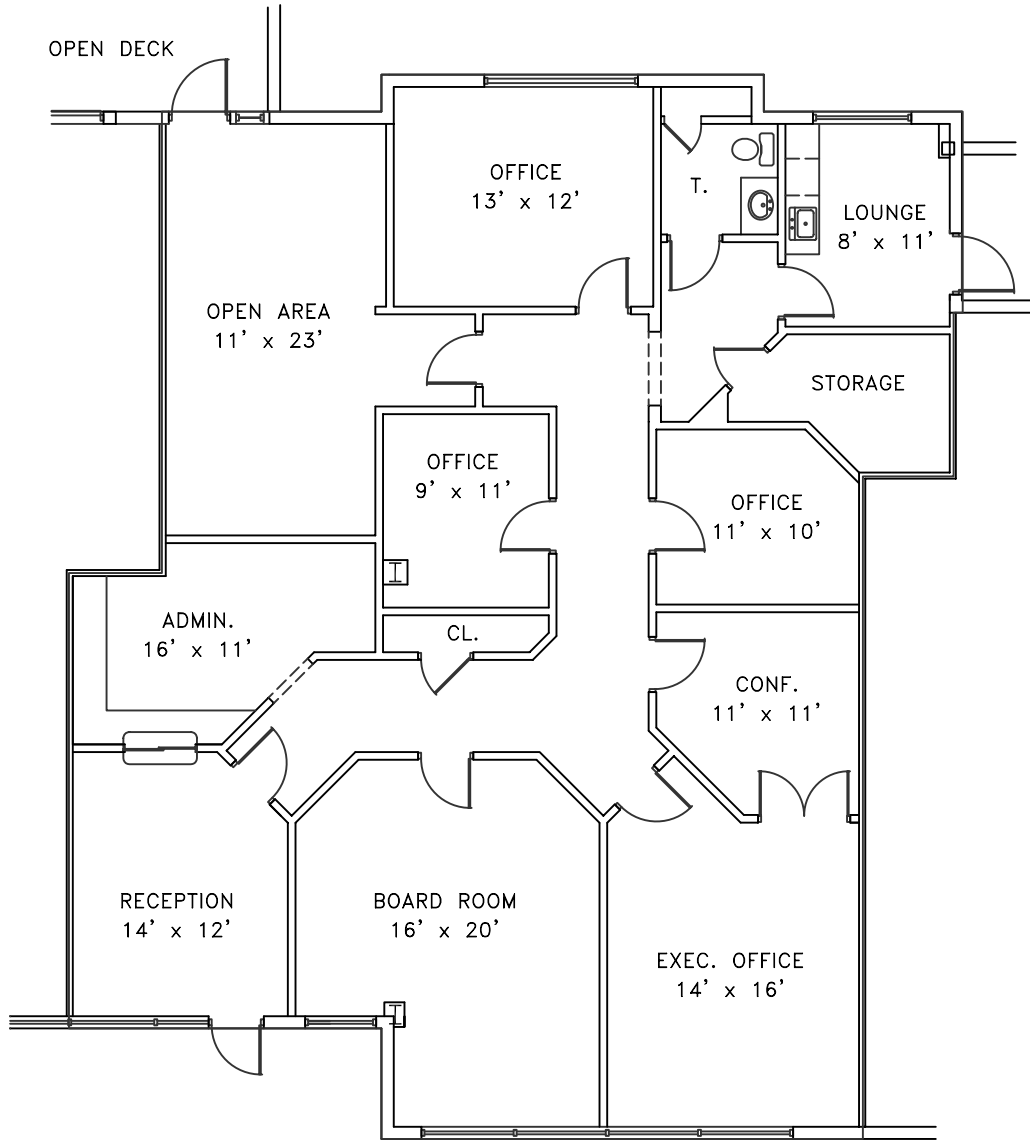


# HARBOUR FINANCIAL CENTER

2401 P.G.A. BOULEVARD  
PALM BEACH GARDENS, FLORIDA  
BUILDING H - SECOND FLOOR



HARBOUR



## SUITE 272

2,350 sq. FT.

3/32" = 1'-0"



NOTE:  
LANDLORD RESERVES THE RIGHT TO  
MAKE ANY NECESSARY CHANGES IN  
THE LEASING PLAN. ALL SIZES AND  
DIMENSIONS ON THIS DOCUMENT ARE  
APPROX. AND SUBJECT TO CHANGE.

### LEASING INFORMATION

Call Tom Hamilton: (561) 307-1190  
(561) 624-9500