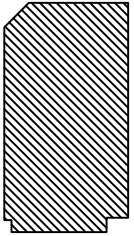
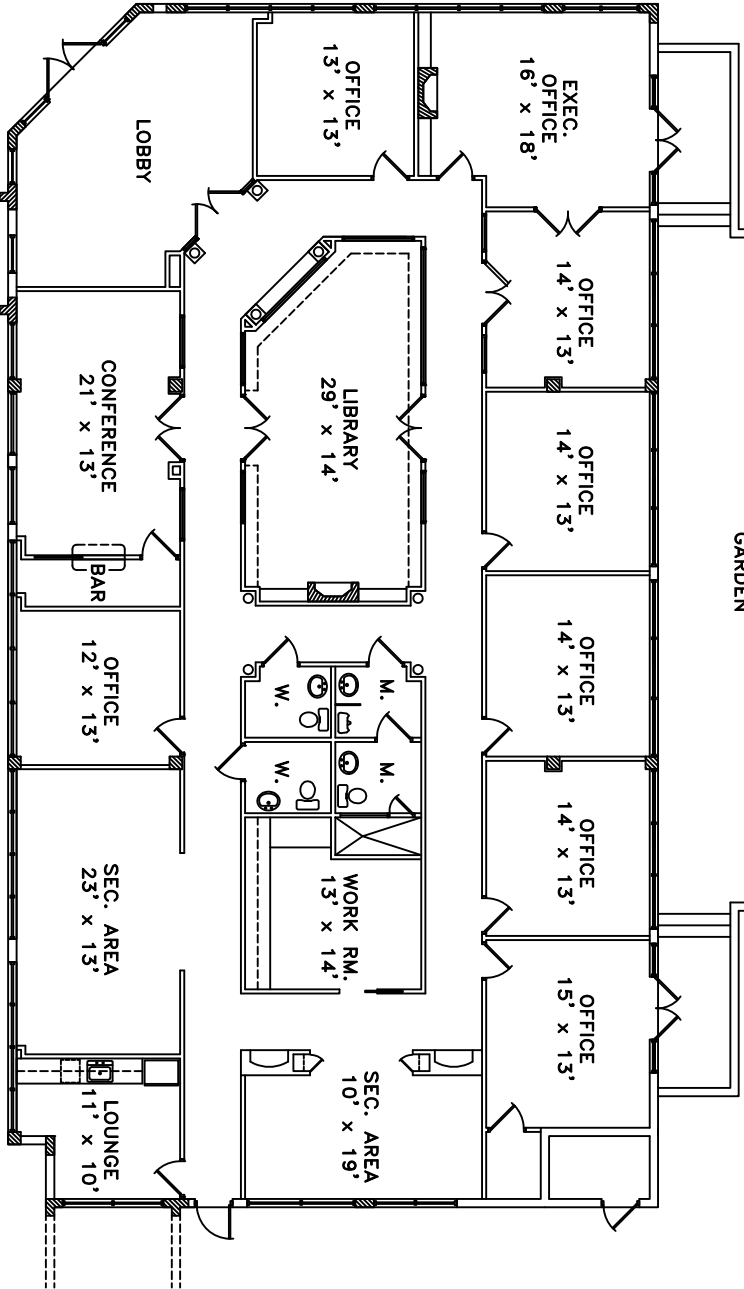


HARBOUR FINANCIAL CENTER  
2401 P.G.A. BOULEVARD  
PALM BEACH GARDENS, FLORIDA  
BUILDING E  
FIRST FLOOR

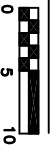


PRIVATE GARDEN



4,829 sq. ft.

SUITE 140



NOTE:  
LANDING RESERVES THE RIGHT TO  
MAKE ANY NECESSARY CHANGES IN  
THE LEASING PLAN. ALL SIZES AND  
DIMENSIONS ON THIS DOCUMENT ARE  
APPROX. AND SUBJECT TO CHANGE.

LEASING INFORMATION

Call Tom Hamilton: (561) 307-1190  
(561) 624-9500