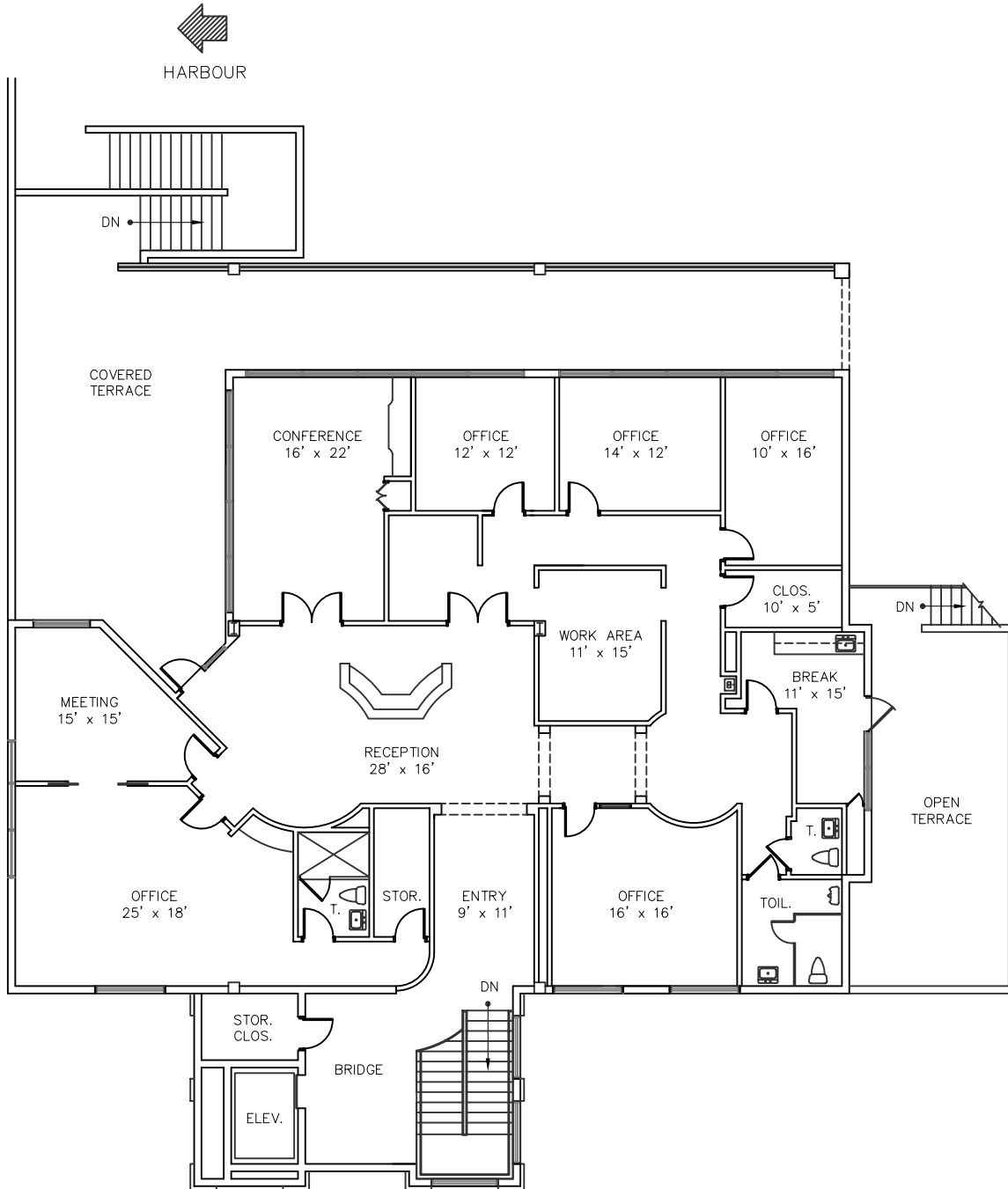


HARBOUR FINANCIAL CENTER

2401 P.G.A. BOULEVARD
PALM BEACH GARDENS, FLORIDA
BUILDING A - SECOND FLOOR



SUITE 200

4304 sq.ft.

1/16" = 1'-0"



NOTE:
LANDLORD RESERVES THE RIGHT TO
MAKE ANY NECESSARY CHANGES IN
THE LEASING PLAN. ALL SIZES AND
DIMENSIONS ON THIS DOCUMENT ARE
APPROX. AND SUBJECT TO CHANGE.

LEASING INFORMATION

Call Tom Hamilton: (561) 307-1190
(561) 624-9500